

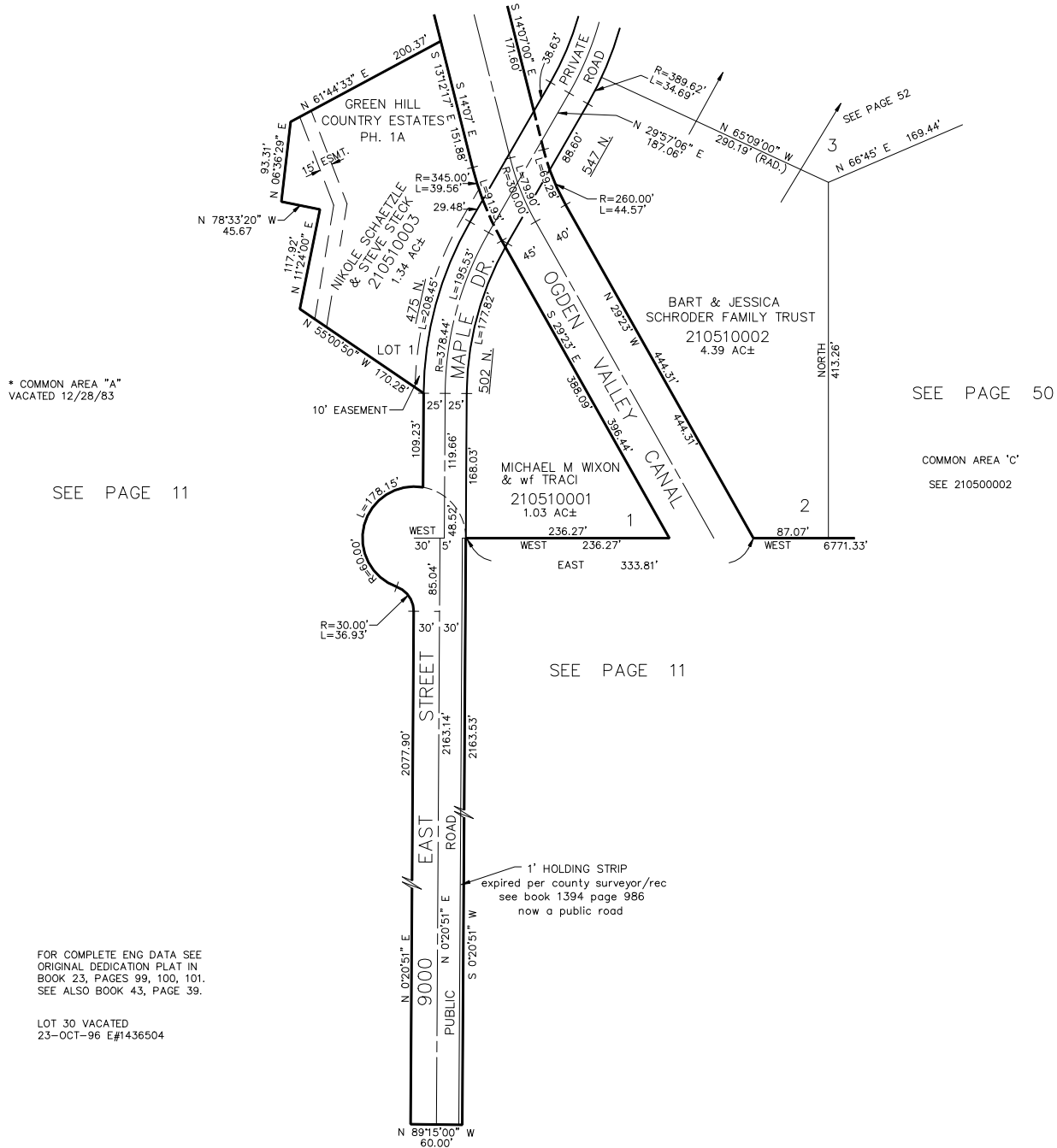
PART OF SECTIONS 9, 10, & 16, T.6N., R.2E., S.L.B. & M.
GREEN HILL COUNTRY ESTATE PHASE NO. 1

LOTS 1, 2 & LOT 1, GREEN HILL COUNTRY EST. PH. 1A

TAXING UNIT: 231

IN WEBER COUNTY
 SCALE 1" = 100'

SEE PAGE 55



* COMMON AREA "A"
 VACATED 12/28/83

SEE PAGE 11

SEE PAGE 50

COMMON AREA "C"
 SEE 210500002

SEE PAGE 11

FOR COMPLETE ENG DATA SEE
 ORIGINAL DEDICATION PLAT IN
 BOOK 23, PAGES 99, 100, 101.
 SEE ALSO BOOK 43, PAGE 39.

LOT 30 VACATED
 23-OCT-96 E#1436504

1' HOLDING STRIP
 expired per county surveyor/rec
 see book 1394 page 986
 now a public road